

New tanks references

Starting from January 1st 2022, as a consequence of the merger of the subsidiary DAL BARCO SRL, it was decided to standardize the coding of oil tanks for underbody and rear cab fitting of the families **EASY** and **CLASSIC** following the coding logic listed above:

H 1 G S 0 4 0 5 2 6 0

Tank type

H : Horizontal
V : Vertical

Contents

1 : Oil standard
2 : Oil customised
3 : Water standard
4 : Water customised
5 : Air
A : Fuel original type
B : Fuel customised not approved
C : Fuel standard approved
D : Fuel customised approved
E : Combi Fuel/Oil customised
F : Combi Fuel/Oil standard approved
G : Combi Fuel Left/Oil Right customised approved
H : Combi Oil Left/Fuel Right customised approved
L : Combi Fuel/Fuel customised approved

Material

A : Aluminium
G : Steel gray painted
R : Steel red Painted
N : Steel black painted
X : Stainless steel
T : Chased stainless steel
F : Raw steel
C : Aluminium CHROME painted

Mounting

L : Side
R : Rear cab
S : Under body
M : Single bracket
N : not defined

Family

01 : Tipo 0001: 21x26	0A : Tipo A: 40x45
02 : Tipo 0002: 28x34	0B : Tipo B: 37x57
03 : Tipo 0003: 26x30	0C : Tipo C: 45x50
04 : Tipo 0004: 20x37	0D : Tipo D: 48x59
05 : Tipo 0005: 24x39	0E : Tipo E: 57x60
06 : Tipo 0006: 20x52	0F : Tipo F: 65x57
07 : Tipo 0007: 32x58	0G : Tipo G: 70x60
B7 : Tipo 0087: 32x58 domed	0H : Tipo H: 73x65
08 : Tipo 0008: 36x76	BI : Tipo I: 70x70 domed
09 : Tipo 0009: 33x76	OL : Tipo L: 65x65
10 : Tipo 0010: 25x71	BL : Tipo L: 65x65 domed
11 : Tipo 0011: 24x36	OM : Tipo M: 63x69
17 : Tipo 0017: 29x36	ON : Tipo N: 42x65
18 : Tipo 0018: 27x41	BP : Tipo P: 48x65 domed
20 : Tipo 0020: 35x60	BQ : Tipo Q: 62,5x68 domed
23 : Tipo 0023: 31x38	70 : Tipo 70: 45x71
24 : Tipo 0024: 32x46	BR : Tipo R: 64x71 domed
25 : Tipo 0025: 89x26	BS : Tipo S: 64x71,5 domed
26 : Tipo 0026: 95x33	BT : Tipo T: 63x57 domed with trapezoidal shape
30 : Tipo 30: 31x45	00 : not defined
40 : Tipo 40: 31x38	
50 : Tipo 50/0055: 35x45	

Version

... serial number automatically assigned by the configurator

Equipment

Bare tank : **1**
Complete tank : **2**
Tank with fixing kit only : **3**
Complete tank without fixing kit : **4**
Tank with welded supports only : **5**
Complete tank with welded supports : **6**
Tank with floor fitting straps : **7**

Length

... tank length in cm

Below you will find details of changes that will intervene when current warehouse stocks will be sold out.

UNDERBODY TANKS - EASY family

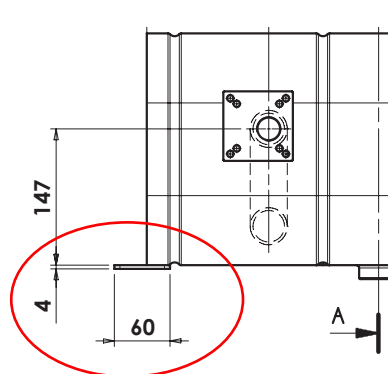
- 13550000205 become **H1GS0403360** LT 21 with welded brackets on the body
- 13550000214 become **H1GS0403361** LT 21 with welded brackets on the body and filter flange
- 13550000401 become **H1GS1105062** LT 40 with welded brackets on the body
- 13550000410 become **H1GS1105063** LT 40 with welded brackets on the body and filter flange
- 13550000652 become **H1GS2405061** LT 60 with welded brackets on the body
- 13550000661 become **H1GS5005060** LT 70 with welded brackets on the body and filter flange
- 13550001071 become **H1GS2407570** LT 100 with fixing straps and filter flange
- 13550001080 become **H1GS2407571** LT 100 with fixing straps



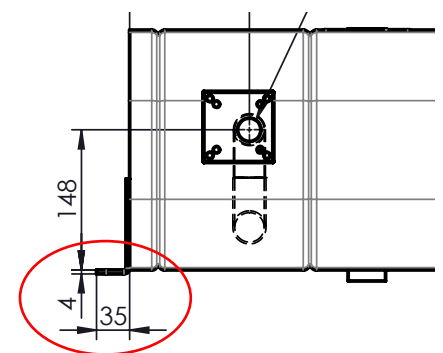
UNDERBODY TANKS with distributor plate - EASY family

For this family in addition to the new code was also introduced a change to the shape of the supports and to their welding point in order to eliminate/ reduce stress at the breaking point.

- 13550020201 become **H1GS1102860** LT 20 for MODULAR 150/FP80
- 13550020309 become **H1GS1104060** LT 30 for MODULAR 150/FP80
- 13550020407 become **H1GS1105061** LT 40 for MODULAR 150/FP80
- 13550020505 become **H1GS1106060** LT 50 for MODULAR 150/FP80



was



become

REAR CAB TANKS with distributor plate - **CLASSIC** family

- 13570001006 become **V1GR0706020** LT 100 320X580X600 + distributor plate
- 13570001300 become **V1GR0708020** LT 130 320X580X800 + distributor plate
- 13570001659 become **V1GR0710020** LT 165 320X580X1000 + distributor plate
- 13570001800 become **V1GR0711020** LT 180 320X580X1100 + distributor plate
- 13570002452 become **V1GR0714020** LT 245 320X580X1400 + distributor plate
- 13570000758 become **V1GR3006020** LT 75 310X450X 600 + distributor plate



- 13590000283 become **V1GR0710021** LT 165L 320X580X1000 + distributor plate
- 13590000292 become **V1GR0711021** LT 180L 320X580X1100 + distributor plate



Sales department is at your service for any further detail.