

PTO for IVECO 2835.6 gearboxes

OMFB is glad to introduce you the new PTO's for IVECO 2835.6 gearboxes.

The order codes for the several versions are the following:

- PTO with mechanical control: **001-074-00134**
- PTO with electromagnetic control: **001-574-10137**
- PTO with pneumatic control: **002-174-00131**



001-074-00134



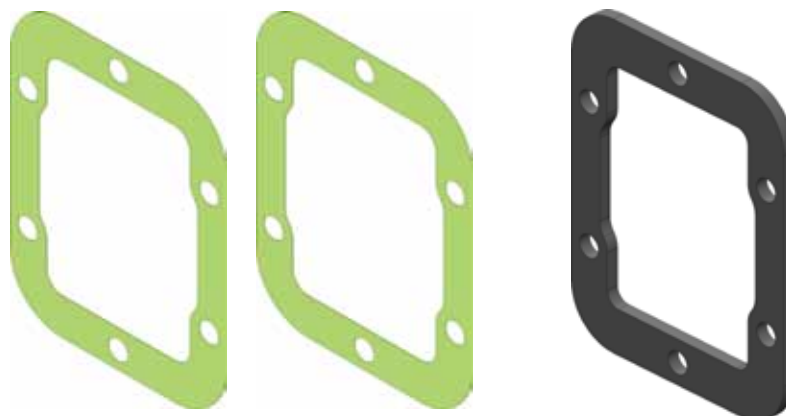
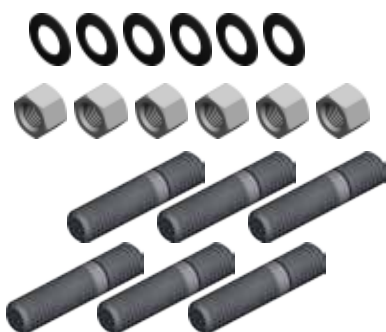
001-574-10137



002-174-00131

Gearbox	Version	Pto ratio@1000 eng.rpm rpm	Max torque Nm	Mounting side	Output	Rotation	Mounting kit
2835.6	13	855	180	Left	Rear	Cw	154-2-3394

These PTO's can be mounted on IVECO 2835.6 gearbox using the new mounting kit **154-002-03394**.



For any information you may need, please contact export department.