

PTO's for IVECO 2840.6 MY2011 gearboxes

OMFB is glad to introduce you the new PTO's for IVECO 2840.6 MY2011 gearboxes.

The part numbers for the versions with die-cast body are the following:

- Pto with mechanical control: **001-071-00137**
- Pto with electromagnetic control: **001-571-10130**
- Pto with pneumatic control: **002-171-00134**
- Pto with vacuum control: **002-371-00132**



Gearbox	Version	Pto ratio@1000 eng.rpm	Max torque	Mounting side	Output	Rotation	Mounting kit
		rpm	Nm				
2840.6 MY2011	13	1077	130	Left	Rear	Cw	154-3-3133

The part numbers for the versions with cast iron body and high engagement are the following:

- Pto with mechanical control: **001-071-00137**
- Pto with electromagnetic control: **001-571-10130**
- Pto with pneumatic control: **002-171-00134**
- Pto with vacuum control: **002-371-00132**

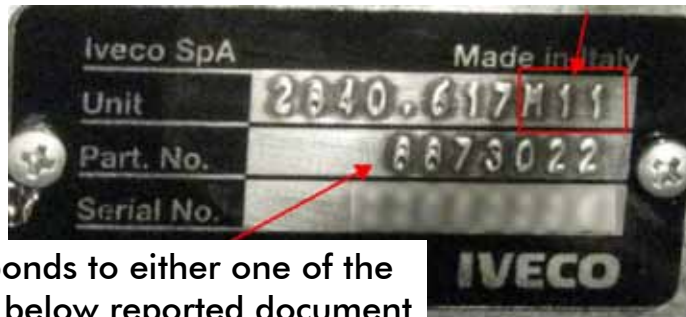


Gearbox	Version	Pto ratio@1000 eng.rpm	Max torque	Mounting side	Output	Rotation	Mounting kit
		rpm	Nm				
2840.6 MY2011	13	1264	128	Left	Rear	Cw	154-3-3133

Gearbox identification 

GEARBOX IDENTIFICATION

In the last part of the description you can find the new version 2011 (M11)



Part number corresponds to either one of the two indicated in the below reported document (in this case 887022)

Gearbox	Part Number	PTO Code	
2840.6 MY2011	8873021 or 8873022	001-071-00137	PTO die-cast body low engagement
		001-571-10130	
		002-171-00134	
		002-371-00132	
	8873022	001-072-00136	PTO cast iron body high engagement
		001-572-10139	
		002-172-00133	
		002-372-00131	

When label cannot be found, you can distinguish the new gearbox from the old one in any case thanks to the presence of a double hatch:

